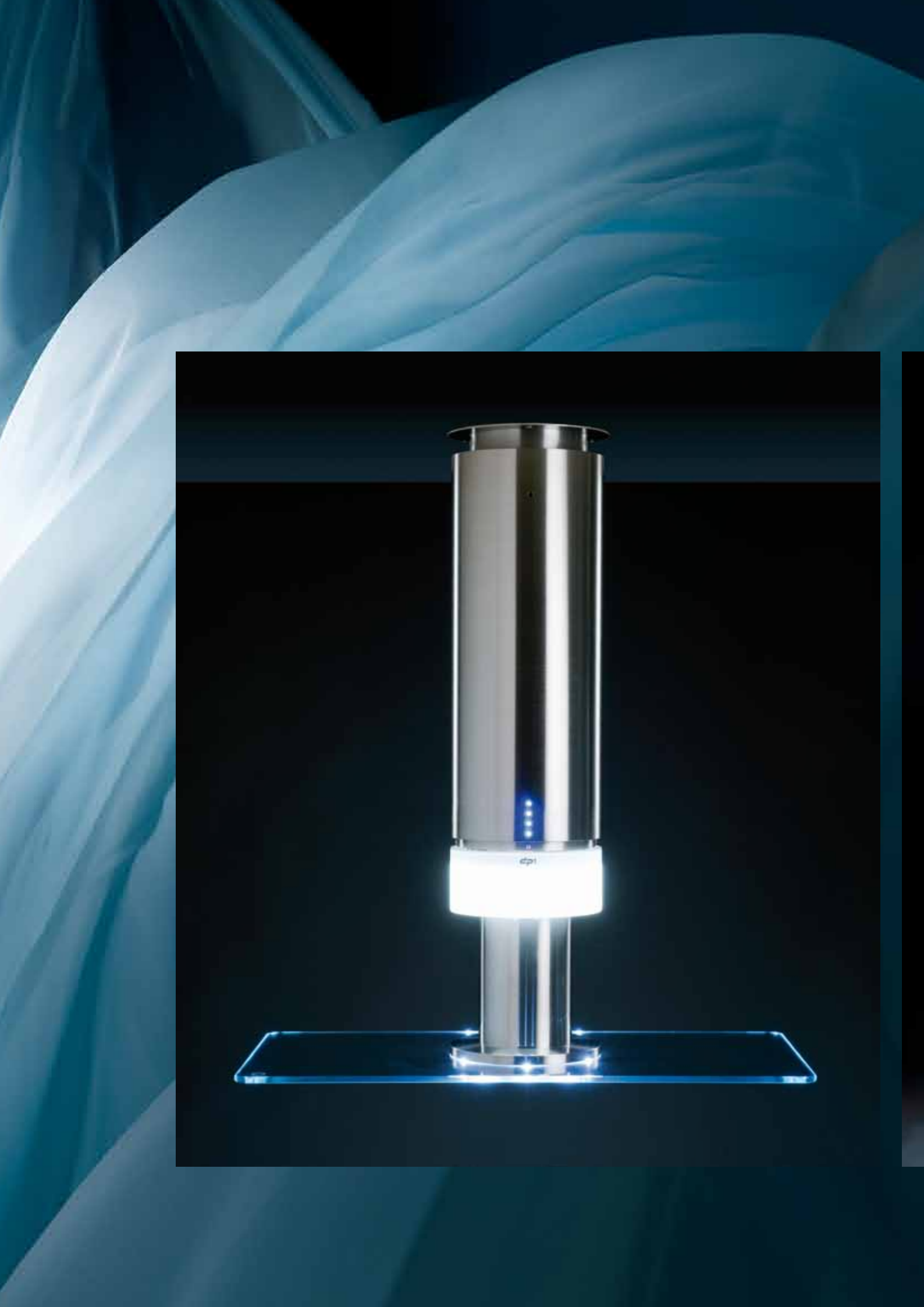




DPI
The ultimate touch.



A perfect harmony between
purity of the lines and power.



Design: Herbert Lanzinger, Lifestyle Foundation



The system of high-effectiveness extraction, the DPI is the fruit of the convergence of all Halton know-how in the field of the ventilation of the zones of cooking spectacle of the great restaurants and hotels.

The DPI incarnates a vision resolutely contemporary and design of the ventilation of the kitchens: a perfect alliance enters the power of its cyclonic system of aspiration, a purity of the lines worthy of the most daring and creative kitchens, an intuitive tactile order and a high effectiveness LED lighting.

The function of the DPI does not dictate its form. Both are carved (sculptured) by the innovation.

DPI: the final key of the kitchens to living fully.

Halton



TEAM 7



The technology of aspiration of the DPI directly results from the solutions developed by Halton for the professional kitchens

The profile of the tube of the DPI is especially conceived to create an aspiration comparable with a cyclone, whose power is reinforced by the turntable in glass which covers the whole of the surface of cooking.

The entire generated cooking vapours under the vortex are directly aspirated. Even the emitted vapours in the vicinity

The cyclonic force of aspiration the most creative and daring kitchens



are irremediably attracted to be aspired in the same manner.

Surprising quiet force: the DPI remain very quiet thanks to a box of external extraction. Benefiting the tranquillity of a kitchen favourable with the creativity.

According to the length of cooking surface, or for purely aesthetic reasons, the DPI can be equipped with several tubes.

Pleasure of the directions, the direction of an intuitive tactile (touch) order



When the innovation joined simplicity, it becomes intuitive.

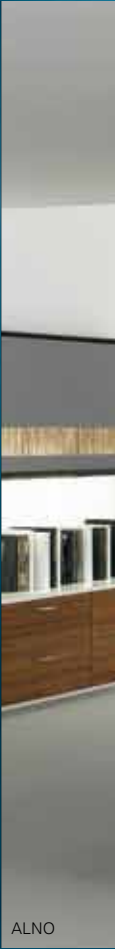
All the functions of the DPI are accessible from a simple gesture thanks to one sensitive band which skirts all the upper part of the luminous ring. Of some side that it is and in any position of installation, these functions remain acces-

sible. The DPI can be also controlled in a traditional way with a set of switches or, in a more elaborate way, with a LCD touch-screen.

ALNO

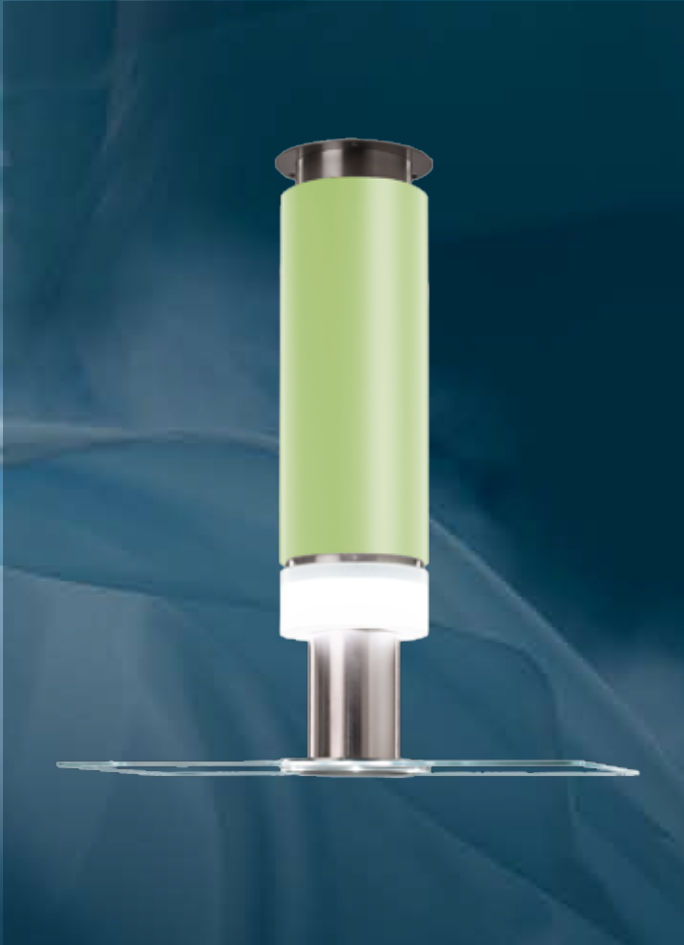


Halton



ALNO





TEAM 7

A sculptured (carved) personality thanks to a concentration of innovations



Without a unique concentration of innovations, the DPI would not be what it is, with the proportions and the balance which it has. Among all, the cyclonic system of aspiration and the tactile ring of control is probably representing the more emblematic.

The user is guided in the selection of the function by a discrete auditory signal system and a series of LED indicators.

Start-up of lighting, selection of the three paces of operation, temporization of the stop of the DPI, the withdrawal of the stainless steel filter cartridge, all is managed with a compact and reliable control system which has allowed to favour design and integration.



Halton

A kitchen with your image

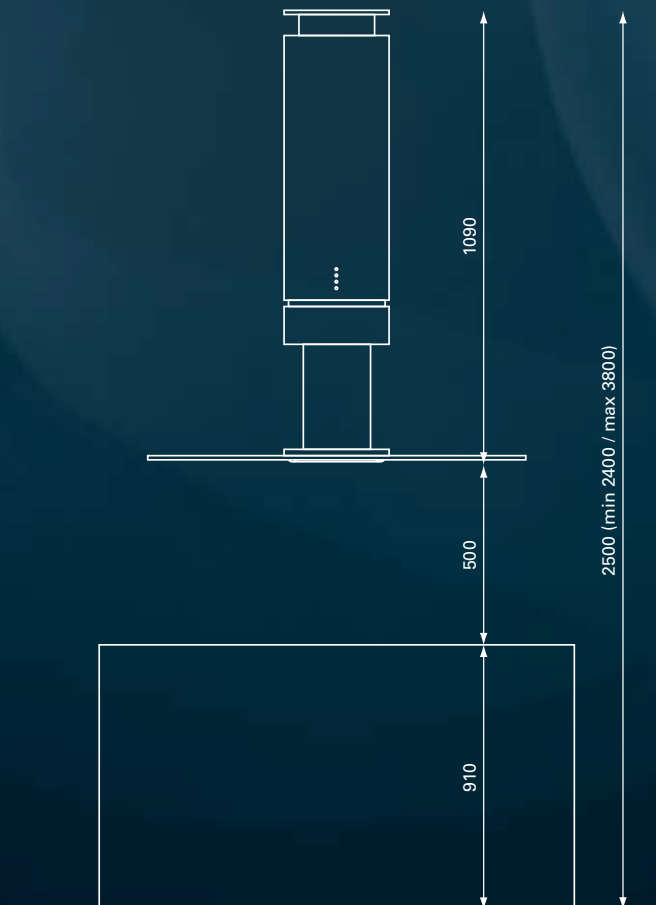
Of a sure value like natural or painted stainless steel, with a natural wood plating, while passing by the application of your decoration on a tube out of polycarbonate, possibilities of personalization of the DPI are numerous.

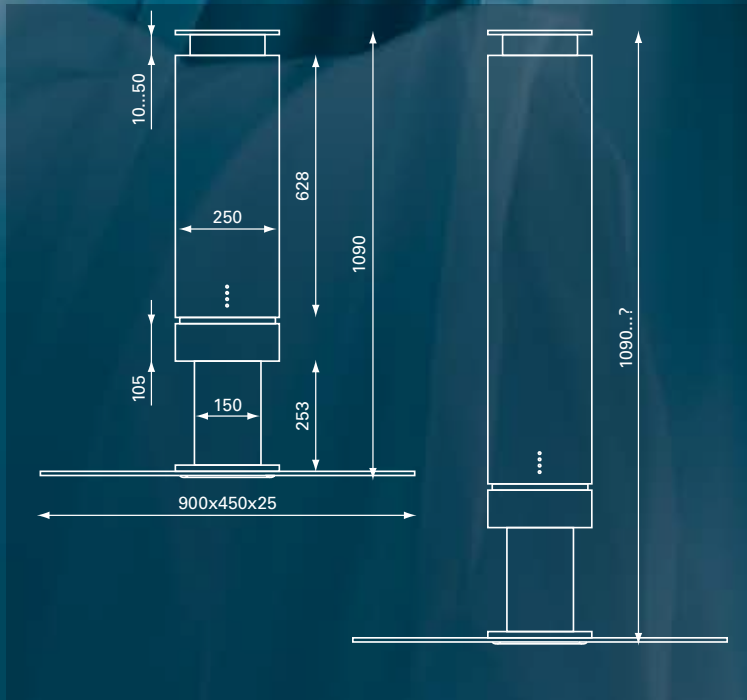
In the same manner, the height of the DPI, the number of tubes as well as the size and the shape of its glass turntable can be adapted for a perfect integration in each kitchen, even and perhaps particularly them kitchens with architectural strong personality.

The LED luminaries matched with the cornice lighting of the DPI the balance and the harmony of a single solution of ventilation reinforce the uniqueness of its kind.

Caractéristiques

- Collects 97.5% of the odours
- Collects 92% of the particles of grease
- Maximum sound pressure level of 52 dB (at maximum speed)
- Compactness
- Stainless steel construction AISI 304
- Plates of strong thickness safety glass (25 mm)



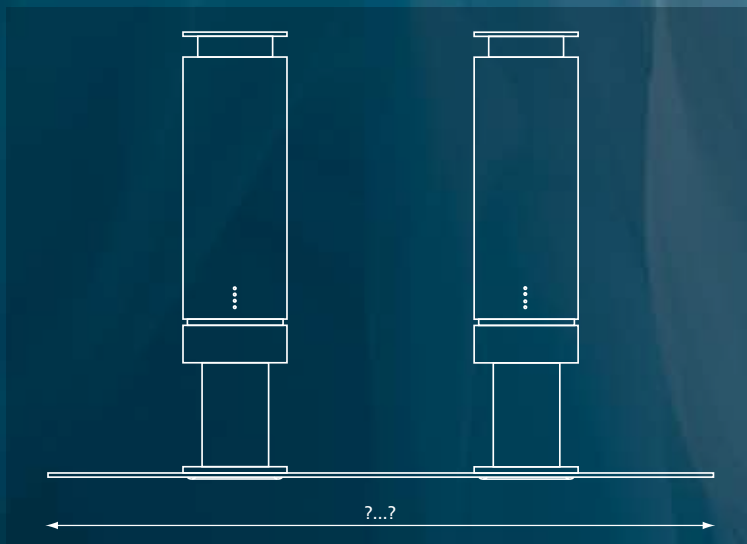


Standard version :

- Height 1090 mm
- Central tube out of stainless steel or polycarbonate personalizable (colour, reasons, logo, photographs...)

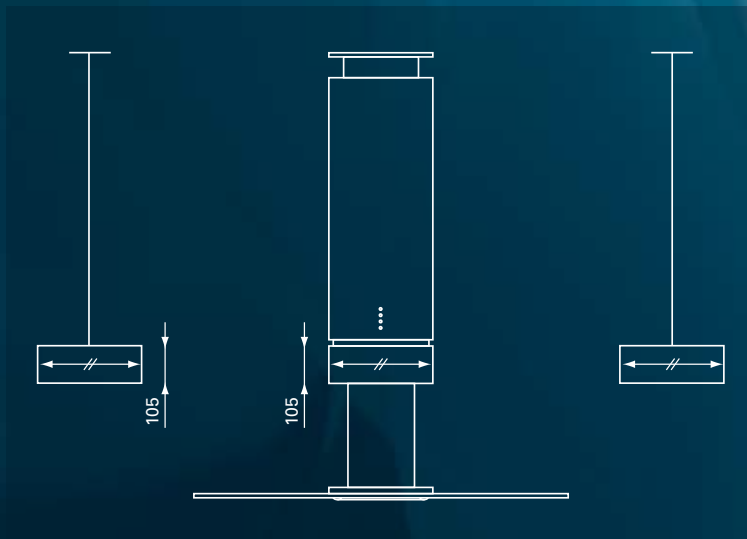
Tailored :

- Height adapted to the height of the part (1090...? mm). The central tube is made to measure to preserve a completely uniform aspect.
- Central tube out of stainless or polycarbonate personalizable (colour, reasons, logo, photographs...)



Version 2 tubes of aspiration:

- Standard height 1090 mm
- Special heights 1090...? mm
- Central tube out of stainless or polycarbonate personalizable (colour, reasons, logo, photographs...)



Luminaries design:

The innovating lighting system of the DPI can also be used to supplement the lighting of the kitchen. A luminary design, of which the proportions respect completely the identity of the DPI, was especially developed for this purpose.

www.halton.fr

Halton, world leader in ventilation systems for professional kitchens

Family group of Finnish origin founded in 1969, Halton is today a world leader in the field of the energy performance, of Wellbeing and of the interior environmental quality of the public buildings and tertiary sectors. Thanks to a permanent will of innovation and with a single passion of the "interior climate", our know-how and our expertise are recognized by the professionals of the sector.

With 6 production units completely dedicated to the solutions of ventilation of the professional kitchens, our Foodservice division profits position of leader world. The DPI is directly resulting from innovating technologies which we developed in this field.

Enabling Wellbeing

Halton